

CWWorks

Installation Guide - FREE Version

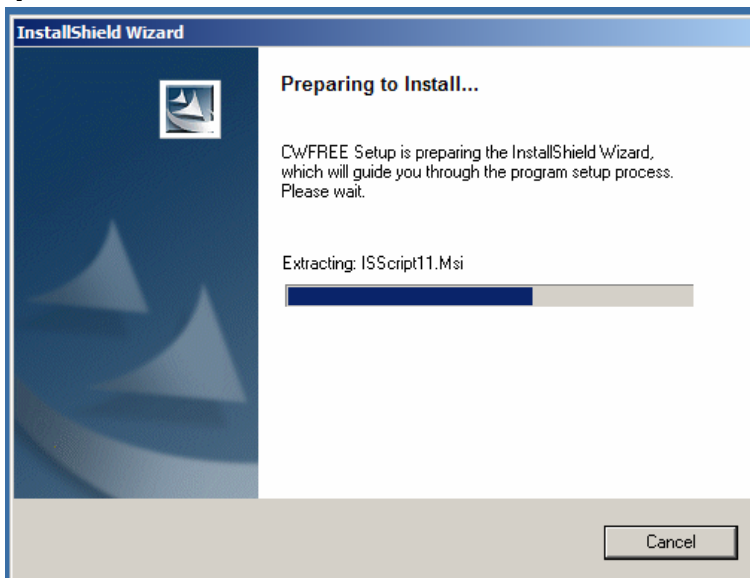
System Requirements

- The computer must have Microsoft Office 200x Professional (MSAccess and MSEXcel) pre-installed.
- After installation, if user receive a message "Unreconized database format". This means that your computer is running on a lower version of MSAccess.

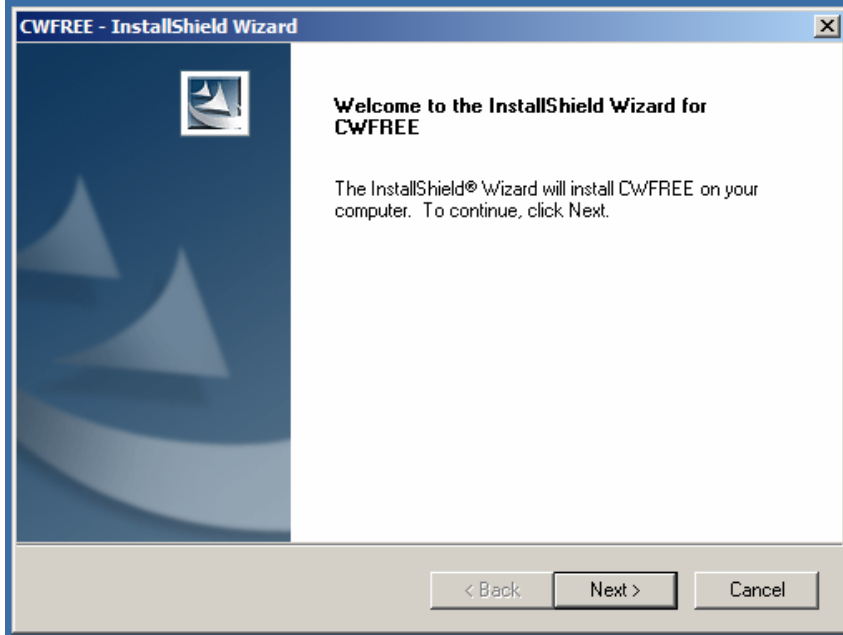
How to install CWorks?

- After downloading any of the below files: -
 - "cw_free_eng.zip" (English)
 - "cw_free_pmx.zip" (Spanish)
 - "cw_free_mal.zip" (Malay)
 - "cw_free_chi.zip" (Chinese)
- Extract the ZIP file and double click on the EXE file.
- Please follow the below steps

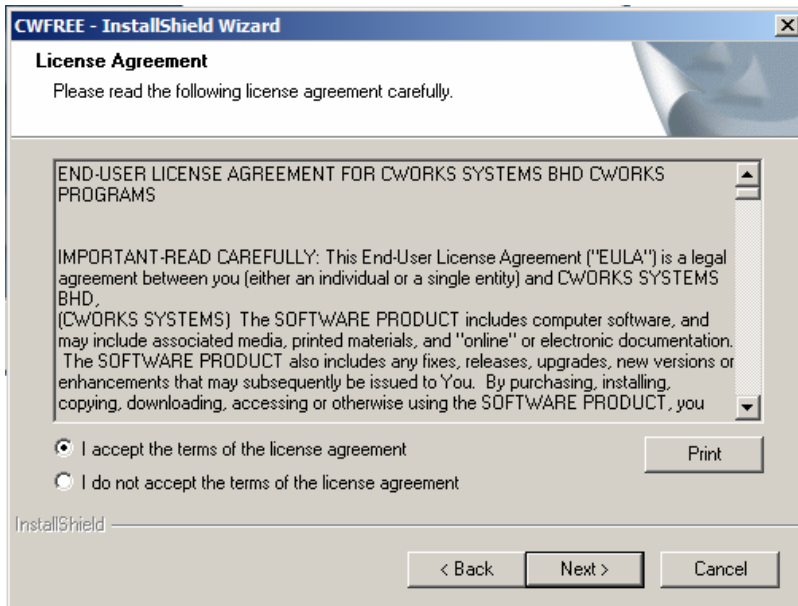
1



2



3



4

CWFREE - InstallShield Wizard

Customer Information
Please enter your information.

User Name:
User

Company Name:
Cworks Systems Berhad

Install this application for:

- Anyone who uses this computer (all users)
- Only for me ()

InstallShield

< Back Next > Cancel

5

CWFREE - InstallShield Wizard

Choose Destination Location
Select folder where setup will install files.

Setup will install CWFREE in the following folder.

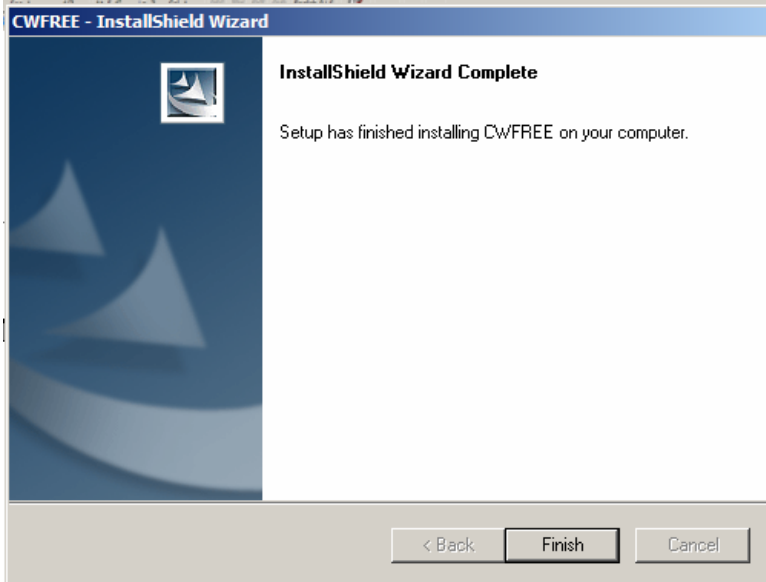
To install to this folder, click Next. To install to a different folder, click Browse and select another folder.

Destination Folder
C:\CWFREE Browse...

InstallShield

< Back Next > Cancel

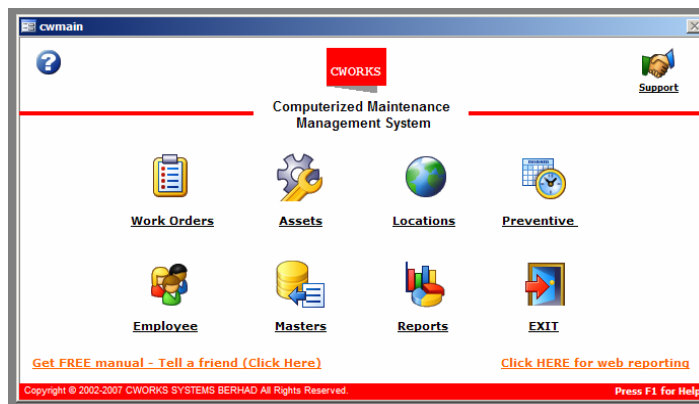
6



The below icon will appear on the desktop. Double click on the icon to start CWorks.



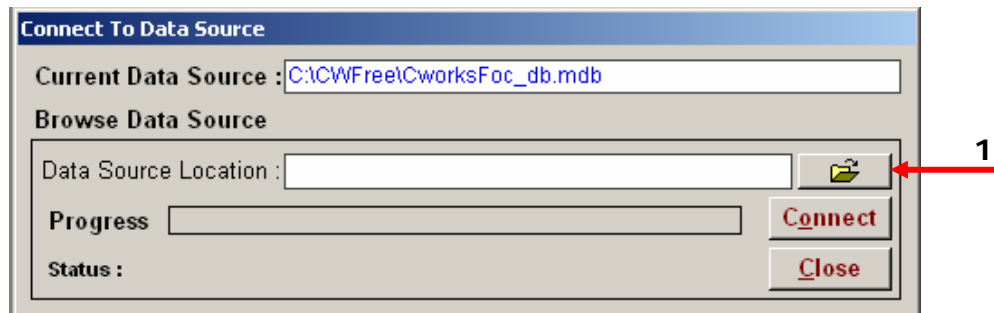
CWorks Icon



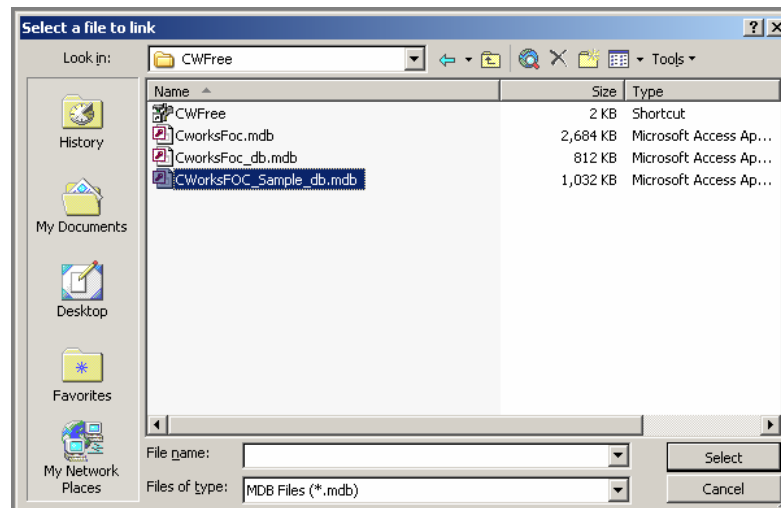
CWorks Main Screen

To change the data link to the sample database

- By default the system will automatically connect to CWorks empty database.
- We have provided two (2) databases in this package. One has NO data (Filename: CworksFoc_db.mdb)and one has sample data (Filename: CWorksFOC_Sample_db.mdb).
- To change the database connection to the sample database click on "FILE ->DataLink" at menu bar (top left of the screen).
- The below menu will pop-up.

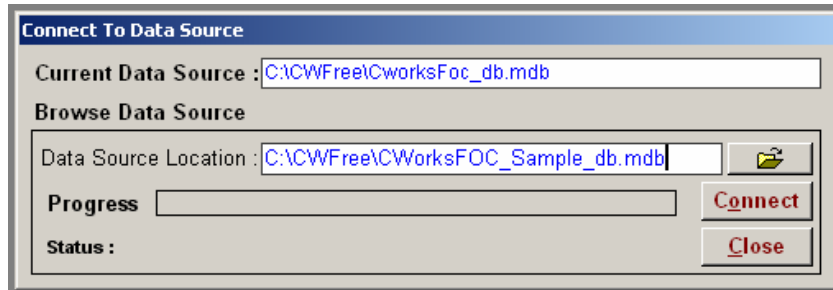


- To change click on (1)



- Find for CWFree directory in your C drive.
- Select file name : CWorksFOC_Sample_db and click SELECT button.

- Data source now should be "C:\CWFree\CWorksFOC_Sample_db.mdb". See below.



- Click "CONNECT" button to apply the new connection.
- A message will appear to confirm that the connection is successful done.

